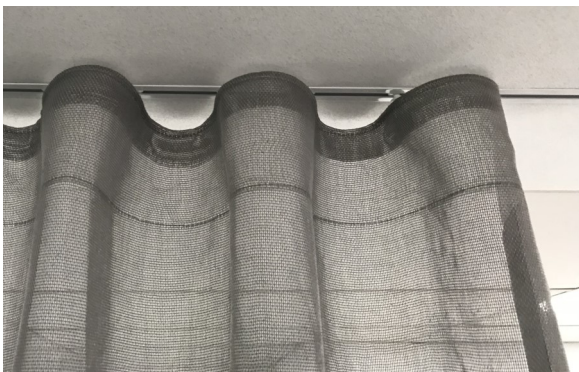


Series 70 - New Improved Recess Track

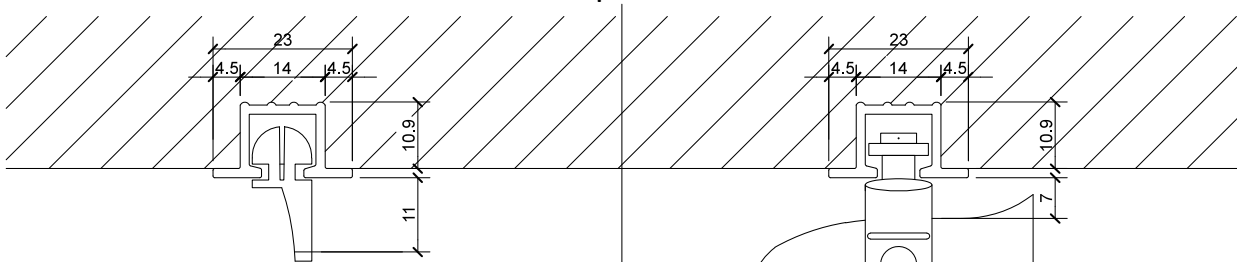
Series 70 – Recess Track is designed for top fixing directly into the Gyprock ceiling lining, with the edge of the Gyprock sitting on the flange of the track, so the curtain appears to fall directly out of the ceiling.

FEATURES

- Pre-drilled and countersunk every 150mm for ease of fixing through the track.
- New track has a 4.5mm flange for the gyprock and a new end cap for a clean edge over the gyprock.



- Bent to a tight radius of 150mm
- Track length 5.8m can be butted together for longer installations. It will be moving to 6m in the future.
- Suitable for both conventional curtains pleats and S-Wave Curtains



SERIES 70 RECESS TRACK
Gliders 5832

NOTE:
75mm for clear
pocket tape

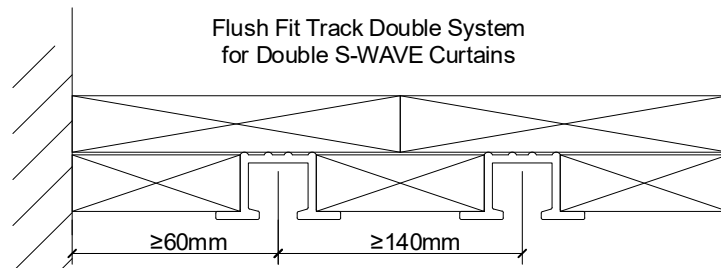
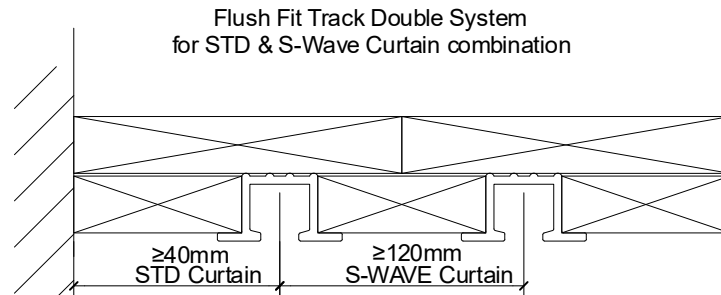
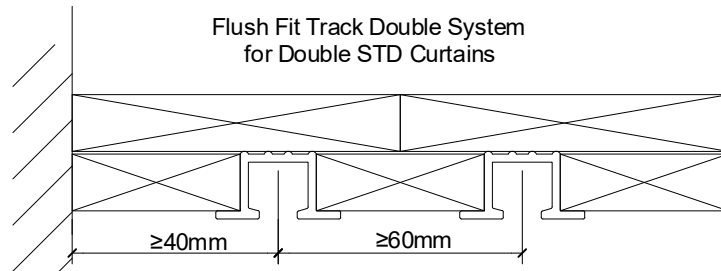
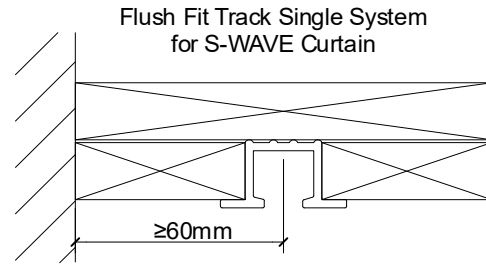
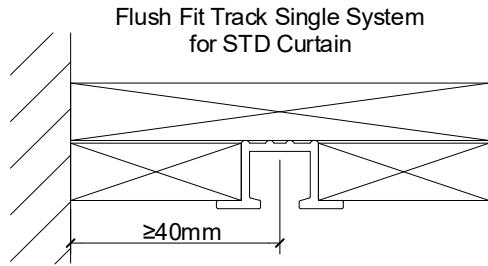
SERIES 70 RECESS TRACK
S-WAVE

**CURTAIN
HARDWARE**

E: Info.nsw@curtainhardware.com.au

P: (02) 9725 5277 F: (02) 9725 5203

Series 70 - Fitting Guidelines



- Builder needs to allow a parallel gap of 14mm from the track to fit into with the gyprock sitting on the flange.
 - Good timber fixing must be supplied for screwing through the track
 - Use small gauge countersunk head screws with small diameter #1 Power driver. Use with care not to damage the running edge of the track when fixing screws
 - The customer will nominate the location and spacing of tracks and will be dependent on the heading of the curtain. Our suggested dimensions above are a guide only.
 - There is an option to have a slot cut out of the track for loading/unloading runners. It is covered by a cap with a twist lock. This means the track can be left empty and covered with painter's masking tape to prevent plaster and paint etc. contaminating the track. Allowing the runners to be added when the curtains are ready to hang.
 - * If the curtain is to be locked to the end of the track, the last runner is placed outside the twist lock cap.
 - * If the curtain is to be free flowing, the cap is reversed so the twist lock is on the end of the track
- Note:** This will mean the curtain will finish 35mm from the end of track.

